

RESIDENTIAL AIR CONDITIONER



PRODUCT CATALOGUE

2023/2024

RESIDENTIAL AIR CONDITIONER

 www.linkedin.com/company/lennox-emea
 www.lennoxemea.com/lennox

LENNOX Polska Sp. z o. o.; Wybrzeże Gdynskie 6a; 01-531 Warszawa; PL
Tel. +48 22 584 86 10

Lennox zastrzega sobie prawo do zmiany specyfikacji produktu oraz do wycofania lub wymiany produktów bez
uprzedniego powiadomienia lub publicznego ogłoszenia. Lennox stale rozwija i ulepsza swoje produkty.

Headquarters LENNOX EMEA
7 rue des Albatros
Z.I. Les Meurières
69780 Mions - France



SUPERIOR PERFORMANCE TO MEET INFINITE CHALLENGES

The exclusive inverter technology empowers Lennox inverter compressor to deliver best-in-class performance, operating powerfully, efficiently, speedily and steadily under all conditions and at all time.

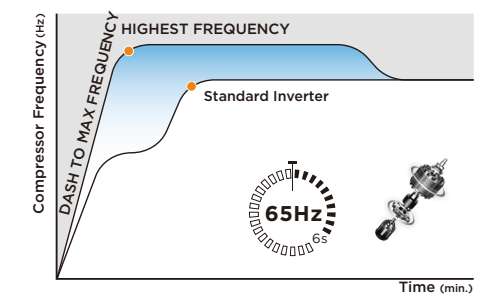


From **-32 °C** to **68 °C**
High-Ambient Cooling/
Low-Ambient Heating

Engineered with the advanced Inverter Quattro™ technology, Lennox air conditioners have one of the strongest inverter compressor systems in the category, and can work at extremely high and low ambient temperatures without interruption, from -32°C to 68°C.

65 Hz in **6** seconds
Flash Cooling/Heating

The inverter is equipped with the advanced **Sprint Activation** technology which enables the compressor to achieve maximum frequency in the spur of the moment upon start-up, providing you with powerful cooling/heating once the AC is switched on.



M-POWERVI

THE TRUE AGSI

TURBO COMPRESSOR INSIDE

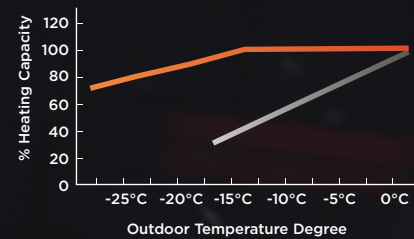
100% HEATING OUTPUT CAPACITY AT -20°C

PEAK PERFORMANCE

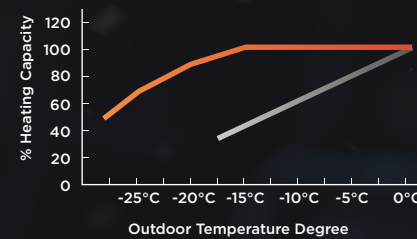
-20°C

100% OUTPUT

M-Power Single-split System
Heating Capacity At Low



M-Power Multi-split System Heating
Capacity At Low Temperature



PEERLESS EFFICIENCY

COP 2.0+

100% OUTPUT AT -20°C

49% ↑



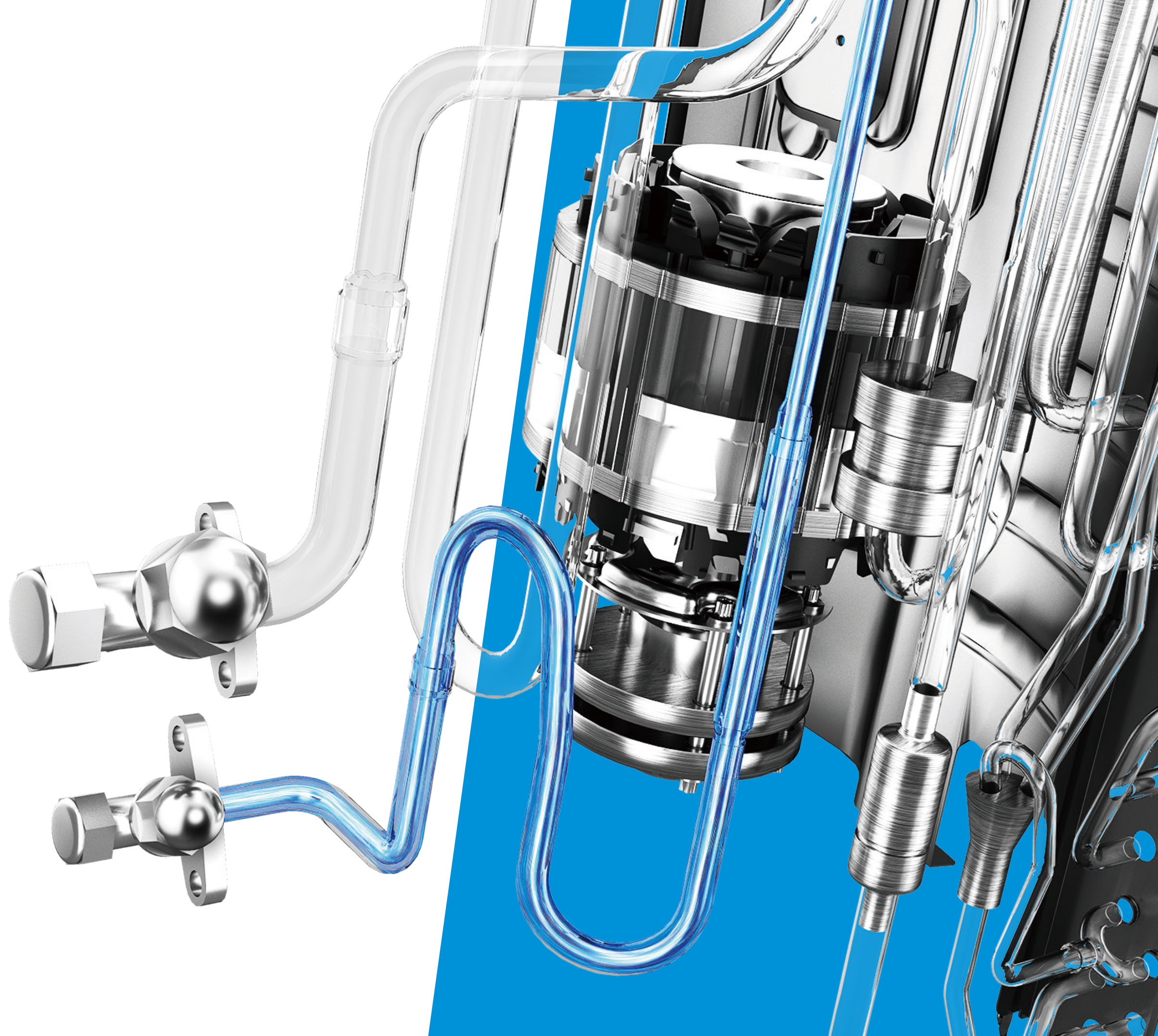
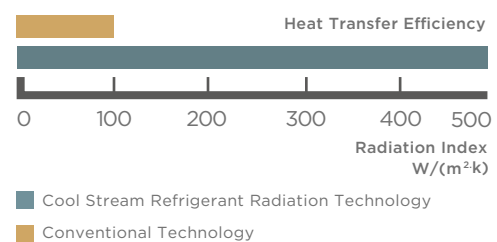
26% ↑





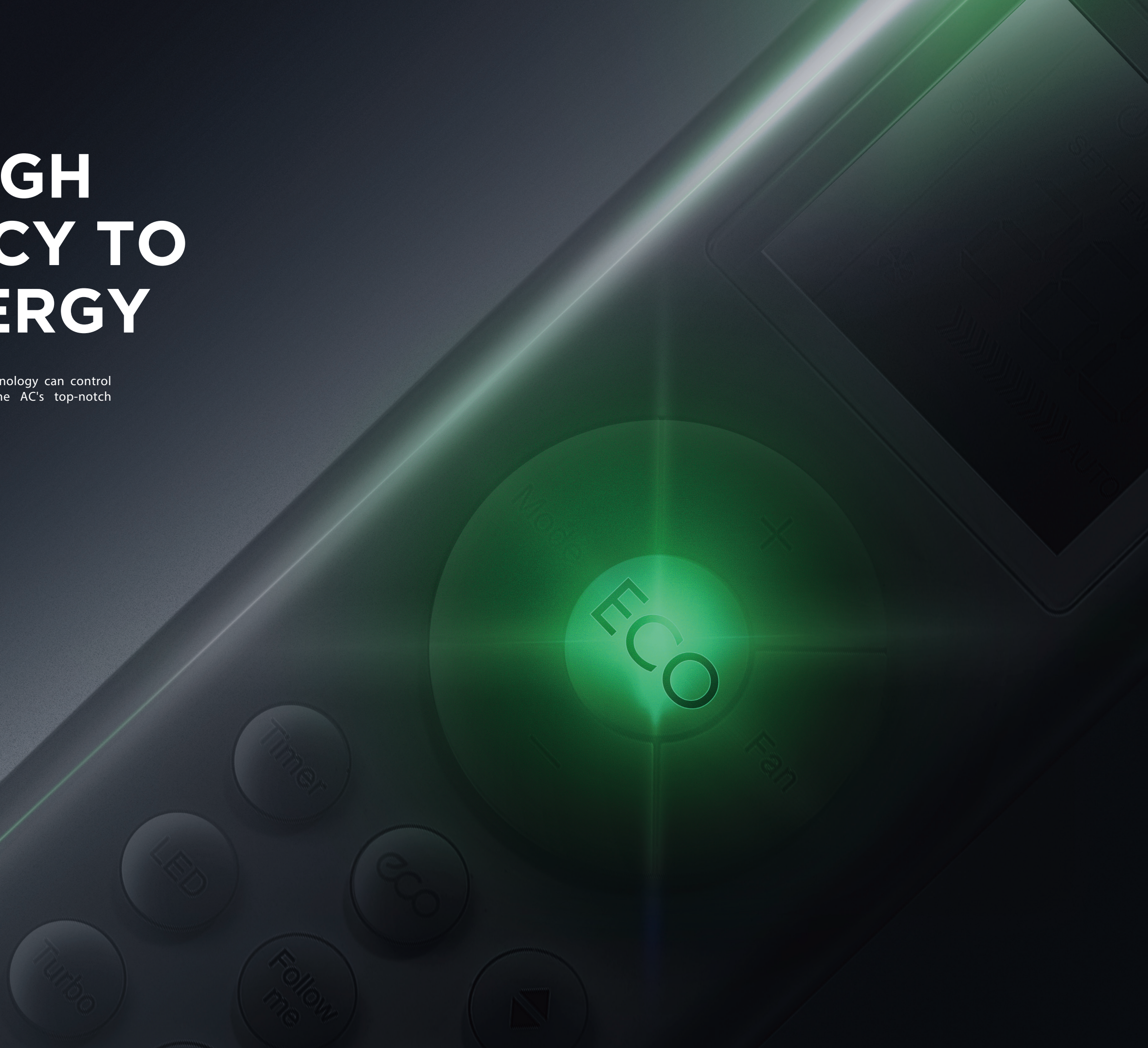
5 Heat Transfer Efficiency

The newly designed refrigerant circuits use improved refrigerant radiation technology to cool down both the heat exchanger and E-box efficiently, which significantly upgrades the outdoor unit's performance and stability in high ambient temperatures.



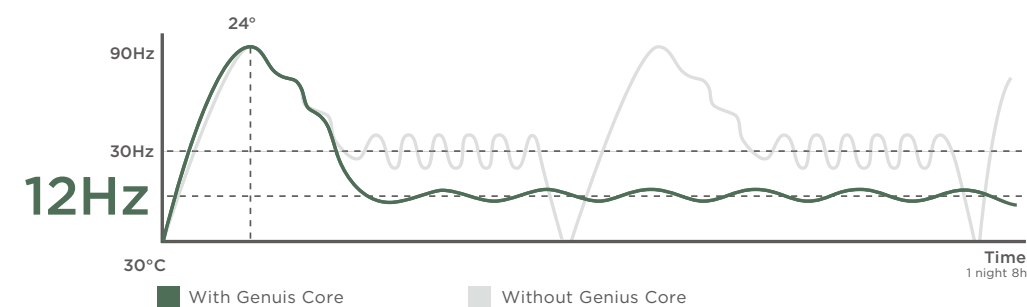
ULTRA-HIGH EFFICIENCY TO SAVE ENERGY

The Lennox inverter compressor's Genius Core technology can control the AC precisely, thus effectively maintaining the AC's top-notch performance while minimizing energy consumption.



Genius CORE

Lennox's Genius Core reduces energy loss significantly by allowing the chip to do more precise signal receiving, accurate data processing, and sending timely instructions to compressor operation. It achieves ultra-stable frequency with minor vibration which decreased by up to 16 times.



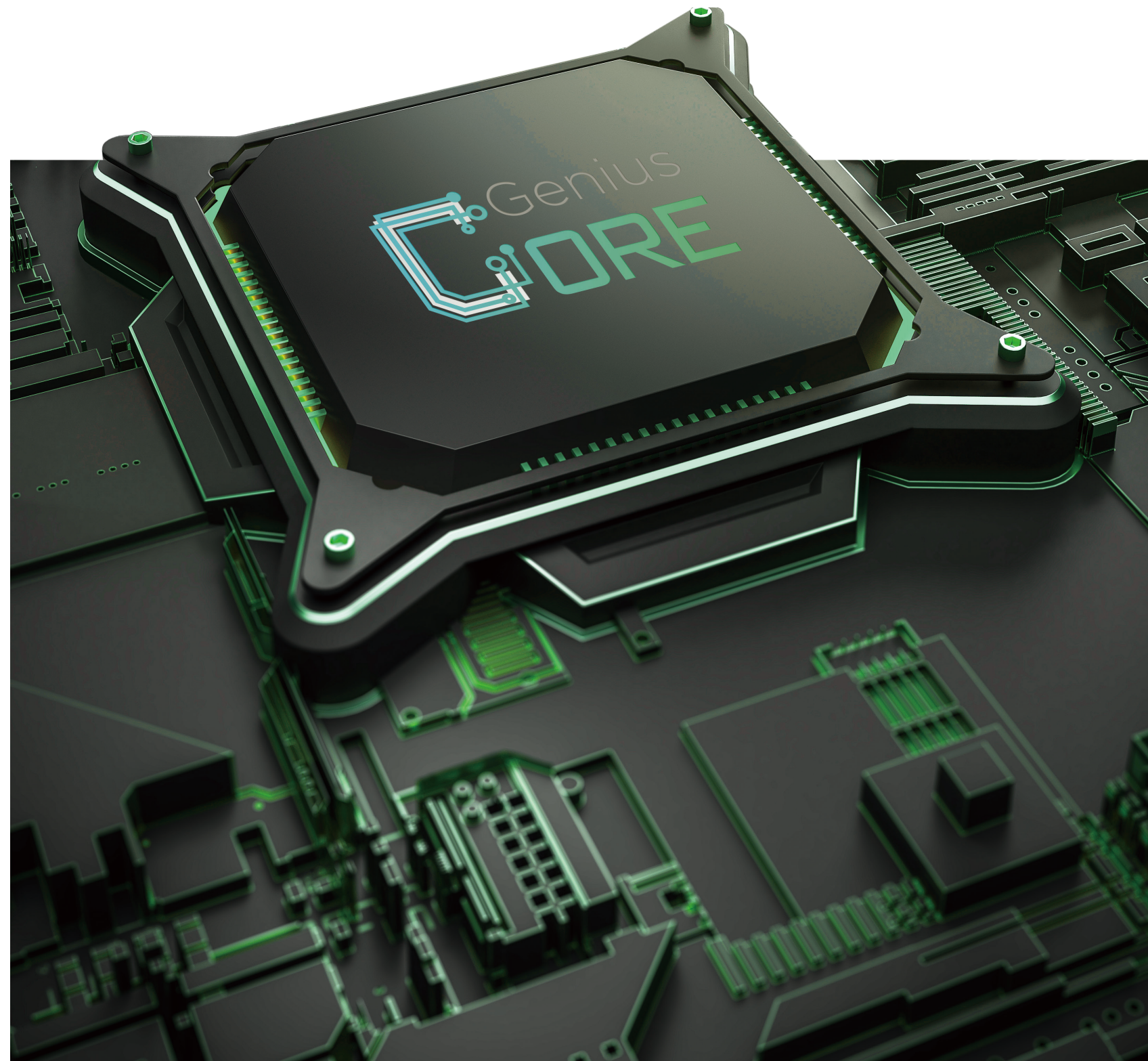
Up to **71%**
Ultra Energy Saving

With the precise control algorithm, Lennox air conditioners are highly efficient, saving up to 71% energy. Besides, the compressor can work in **3-grade power consumption levels (50% / 75% / 100%)** with Gear Change technology, so users can actively control energy use as they want.

Within \pm **0.5**°C
Comfort with Stable Temperature

The inverter technology can help air conditioners easily maintain at the desired temperature within $\pm 0.5^{\circ}\text{C}$ with minimum fluctuation of compressor frequency.

*(1) Applies to selected models only (MSMBALH09HREFNIQRDGW, 9000 Btu/h, 1.5 HP) in selective experimental conditions (indoor ambient: DB 30°C, outdoor ambient: DB 30°C, R.H. 50%, supply voltage: 230V, 50 Hz, environmental test room size: 16.415 m²).(2) The comparison rate applies between the 24°C ECO mode running for 8 hours and the 24°C normal mode without locking the operating frequency of motor compressor and with the fan at the highest speed running for 8 hours. At lower fan speeds, the rates are slightly lower. (3) May vary according to different experimental conditions.

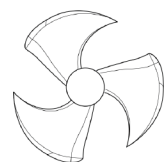


HIGH-EFFICIENCY FAN BLADES AND AIR PASSAGE

30%↓

Less Energy Consumption

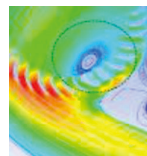
Based on bionic principle, Lennox's optimized fan blade design can effectively work against airflow resistance and reduce noise. Together with the optimized air passage, it delivers the same airflow volume with 30% less energy consumption.



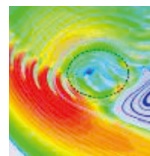
Ordinary Fan Blade
Design



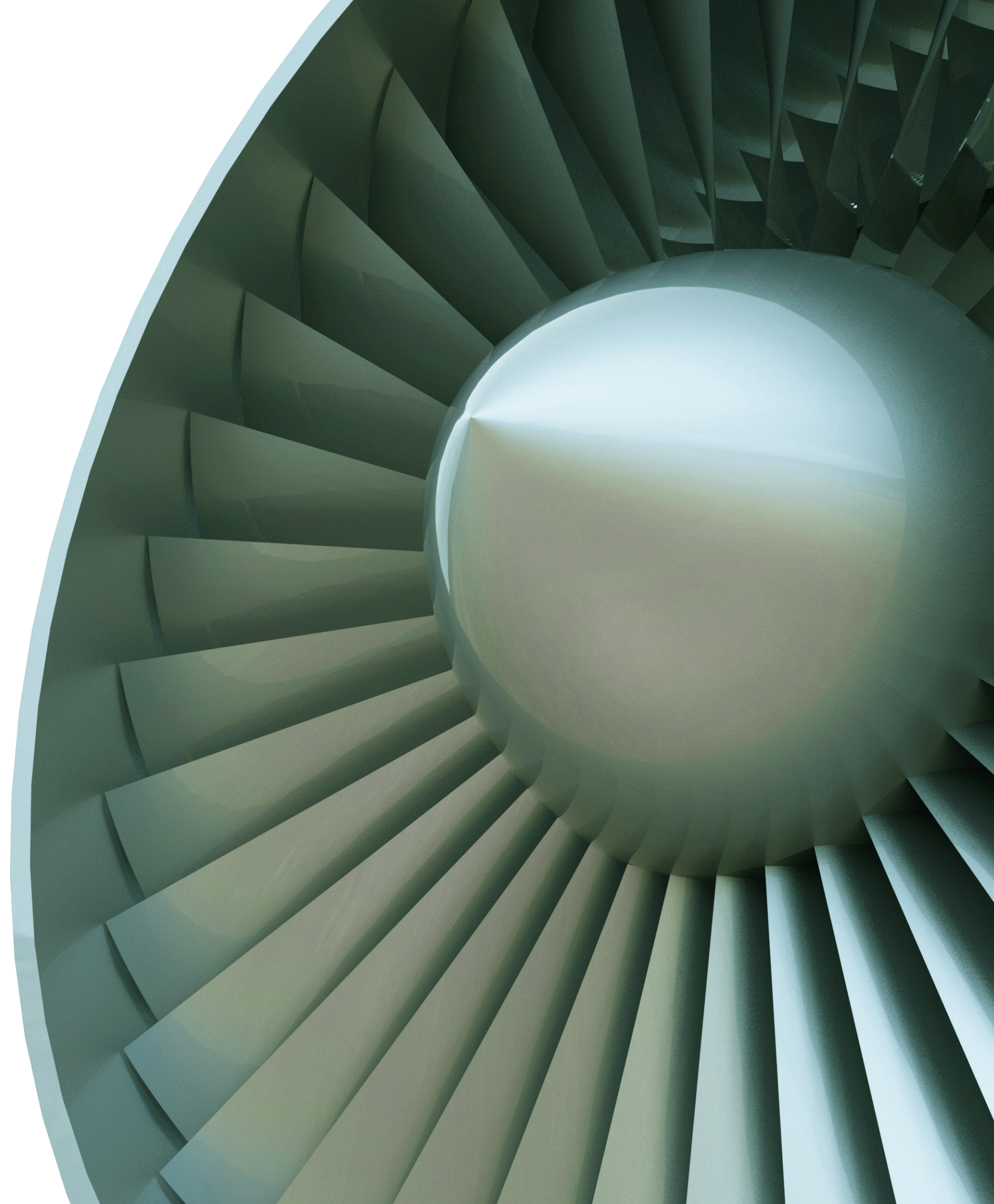
Lennox High Static
Pressure Fan Blade Design



Standard Air Passage
Damper



High-Efficiency Air
Passage Damper



INFINITE HEALTH

Lennox advanced technology makes you free from bacteria, viruses and other harmful substances. Ensure you can take in clean, fresh and healthy air.

air·Guardian

Advanced Air Guardian technology keeps your family safe by releasing trillions of positive and negative ions to effectively kill bacteria, viruses and other harmful particles. Guard the air you breathe.



Dog hair



Dead mite feces



Fungi



Flower pollen



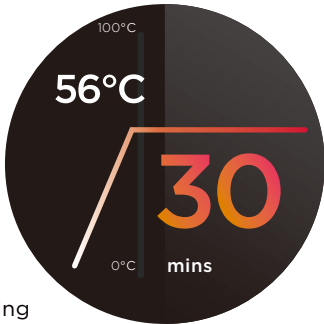
Bacteria



Car exhaust fumes

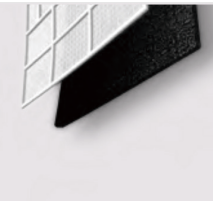
56°C Sterilization

- Set the high temperature sterilization standard of Air Conditioner industry.
- Effectively inactivate thermosensitive bacteria at **56°C for 30minutes.**
- The AC unit can spin the fan in reverse direction to remove condensed water for self-cleaning in Off mode, effectively preventing bacteria and mold from breeding.



99.9% Sterilization

* Data were certified by Guangdong Detection Center for Microbiology



Dual Filter

Dual filtration system thoroughly eliminates harmful substances, providing fresh and clean air for you. The first density pre filter can effectively prevent airborne particles. The second active carbon filter traps dangerous gases and annoying odors.



PRODUCT LINE UP

SPLIT AC

- Aurora

LIGHT-COMERCIAL

- ODU
- A6 Duct
- New Compact4 Way Cassette
- Compact Round Flow Cassette
- Comfort Perfectionist Cassette
- Ceiling & Floor
- Multi Split System
- FlexFit

**SPLIT
AC**





AURORA

Feature



8°C Heating



Flash Cooling



ECO Mode



High Density Filter



Cold Catalyst Filter



Wide Angle Airflow



Remote Control App



Do Not Disturb



Low Noise



Super Ionizer



Long Distance Windblast

Appearance



Rotation: Intelligent Dusting Switch

Apart from the bionic fan blades, the Welling DC motor itself can rotate in reverse to get rid of the sand and dust from outside, ensuring that the AC is clean and functions well under high ambient temperatures.



3D Airflow

The directional air-outlet moves automatically both horizontally and vertically, directing airflow to fill in every corner of the room.



Super Ionizer

Release high-concentration positive (**3,500,000 n/cm**) and negative ions (**10,000,000 n/cm**) to purify the indoor air.

Golden Coating Technolgoy

The Golden Coating Technolgoy is more resistant to oxidation and corrosion than ordinary blue fins of condensers. It can effectively prevent bacteria from breeding and spreading, and withstand corrosive elemetns.



Smart Diagnosis

The Smart Diagnosis automatically tests **97 functions** via its mobile app. Once a problem is detected, the air conditioner will display the error code "EC". By simply swiping your finger you can give your air conditioner a checkup, allowing you to conduct maintenance in a timely manner. It's just like having a private doctor for your air conditioner.

PRODUCT SPECIFICATION

Aurora (SEER 7.0 SCOP 4.0)



Indoor			LXVB-RHM09NI	LXVB-RHM12NI	LXVB-RHM18NI	LXVB-RHM24NI
Outdoor			LXVB-RHM09NO	LXVB-RHM12NO	LXVB-RHM18NO	LXVB-RHM24NO
Power supply		Ph-V-Hz	220-240V,1Ph,50Hz	220-240V,1Ph,50Hz	220-240V,1Ph,50Hz	220-240V,1Ph,50Hz
Rated Cooling	Capacity	Btu/h	9000(3500-11000)	12000(4700-14700)	18000(6600-21400)	24000(10300-30000)
Rated Heating	Capacity	Btu/h	10000(2800-11500)	13000(3650-14950)	19000(4400-23900)	25000(5200-32300)
Seasonal Cooling	Pdesignnc	kW	2.7	3.5	5.3	7
	Energy Efficiency Class		A++	A++	A++	A++
Heating (Average)	Pdesignnh	kW	2.7	2.9	4.1	4.9
	Energy Efficiency Class		A+	A+	A+	A+
Indoor air flow(Hi/Mi/Lo)		m³/h	416/309/230	584/477/395	730/500/420	1020/830/640
Indoor noise level(Hi/Mi/Lo)		dB(A)	39/32/26/23	39/32/26/23	43/33.5/28//	47/41.5/30.5/25
Indoor sound power level		dB(A)	56.0	55.0	58.0	63
Indoor unit	Dimension(W*D*H)	mm	722x187x290	802x189x297	965x215x319	1080x226x335
	Packing(W*D*H)	mm	790x270x375	875x285x380	1045x305x410	1155x415x320
	Net/Gross weight	kg	7.3/9.7	8.6/11.1	10.9/14.2	13.7/17.3
Outdoor air flow		m³/h	1750	1800	2100	3500
Outdoor sound pressure level		dB(A)	56	56	55.5	60.5
Outdoor sound power level		dB(A)	64	65	64.0	66
Outdoor unit	Dimension(W*D*H)	mm	720x270x495	720x270x495	805x330x554	890x342x673
	Packing(W*D*H)	mm	835x300x540	835x300x540	915x370x615	995x398x740
	Net/Gross weight	kg	23.2/25.0	23.2/25.0	33.5/36.1	43.9/46.9
Refrigerant piping	Liquid side/Gas side	mm(inch)	6.35mm(1/4in)/ 9.52mm(3/8in)	6.35mm(1/4in)/ 9.52mm(3/8in)	6.35mm(1/4in)/ 12.7mm(1/2in)	9.52mm(3/8in)/ 15.9mm(5/8in)
	Max. refrigerant pipe length	m	25	25	30	50
	Max. difference in level	m	10	10	20	25
Room temperature	Indoor(cooling/heating)	°C	17-32/0-30	17-32/0-30	17-32/0-30	17-32/0-30
	Outdoor(cooling/heating)	°C	-15-50/-15-24	-15-50/-15-24	-15-50/-15-24	-15-50/-15-24
Application area(Cooling Standard)		m²	12-18	16-23	24-35	32-47
Qty'per 20'/40'/40'HQ			138/282/312	130/276/302	86/174/204	64/134/156

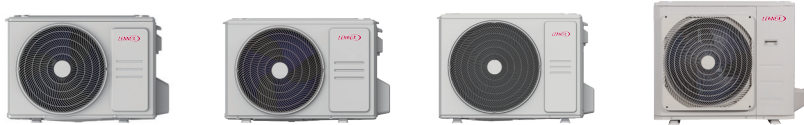
**LIGHT-
COMMERCIAL**

OZ



PRODUCT SPECIFICATION

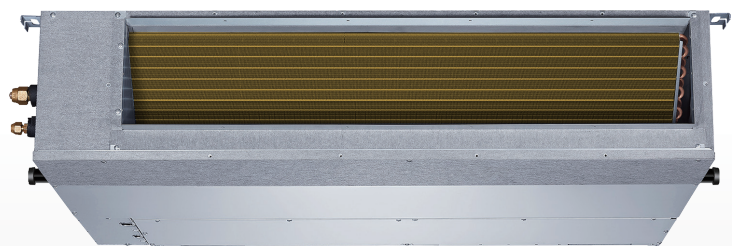
ODU



Model			LXA-RHMI12NO(G)	LXA-RHMI18NO(G)	LXA-RHMI24NO(G)	LXA-RHMI30NO(G)
Power supply		V,HZ,Ph	220-240V,1Ph,50Hz	220-240V,1Ph,50Hz	220-240V,1Ph,50Hz	220-240V,1Ph,50Hz
Outdoor air flow			2200	2100	3500	3800
Outdoor sound pressure level (Hi)		dB(A)	54	59	60	63
Outdoor sound power level (Hi)		dB(A)	62	65	67	70
Outdoor unit	Dimension(W*D*H)	mm	765x303x555	805x330x554	890x342x673	946x410x810
	Packing (W*D*H)	mm	887x337x610	915x370x615	995x398x740	1090x500x885
	Net/Gross weight	kg	26.6/29	32.5/35.2	43.9/46.9	52.8/57.3
Refrigerant piping	Max. refrigerant pipe length	m	25	30	50	50
	Max. difference in level	m	10	20	25	25
Qty'per 20'/40'/40'HQ			132/264/352	114/234/312	99/198/198	44/96/138



LXA-RHMI36NO(G) 230V	LXA-RHMI36NO(G)	LXA-RHMI42NO(G)	LXA-RHMI48NO(G)	LXA-RHMI55NO(G)
220-240V,1Ph,50Hz	380-415V,3Ph,50Hz	220-240V,1Ph,50Hz	380-415V,3Ph,50Hz	380-415V,3Ph,50Hz
4000	4000	4000	7500	7500
63	63	63	63.5	64
70	70	74	73	74
946x410x810	946x410x810	946x410x810	952x415x1333	952x415x1333
1090x500x885	1090x500x885	1090x500x885	1095x495x1480	1095x495x1480
66.9/71.5	80.5/85	71.0/75.0	103.7/118.3	107.0/121.2
75	75	75	75	75
30	30	30	30	30
44/96/138	44/96/138	44/96/138	22/48/48	22/48/48



A6 DUCT

Feature



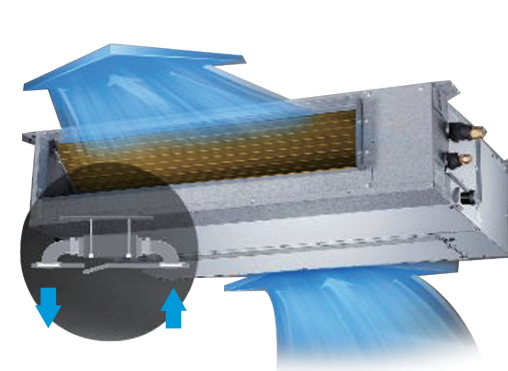
Appearance



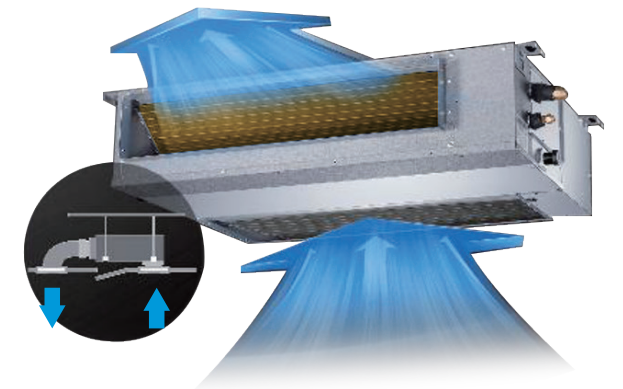
Flexible Installation

Flexible Air Intake

The frame size of air inlet in rear and bottom is the same. It's very easy to switch to match different applications.



Air intake from rear
(Standard)



Air intake from bottom
(Optional)



High Static Pressure up to 160Pa

This unit can be installed in various applications that requires static pressure of 160Pa.



Built-in Drain Pump

The drain pump can lift the condensing water up to 750mm, which is convenient to install drainage pipes under most conditions.

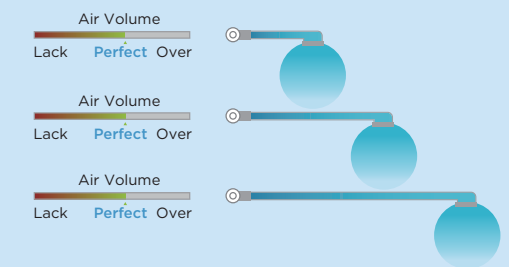


Slim Design

The A6 duct is much slimmer thanks to the redesigned overall structure. It now requires less space for installation.

Constant Air Volume Control

With constant air volume control technology, optimal airflow cools every room consistently and accurately with both short pipes and long pipes.



Easy Maintenance

A6 duct allows operators maintain the motor from the bottom more easily.

A6 duct has big space for maintenance at the side.



Easy Clean

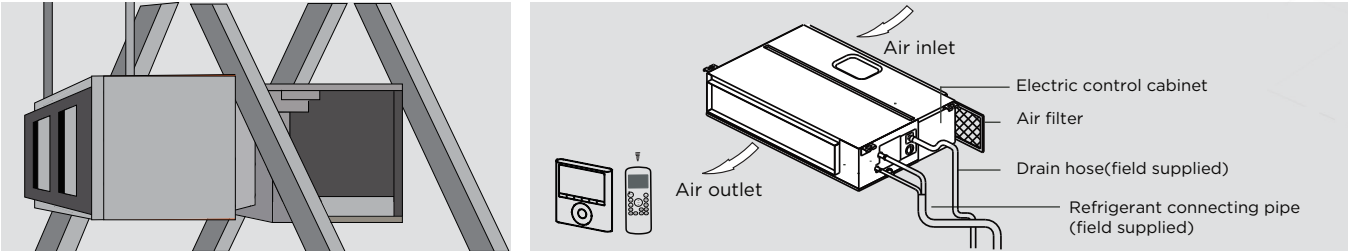
You can pull out the filter from left, right, or from the bottom for easy cleaning.

With a larger window design, once the motor and the blower wheels have been detached, heat exchanger and water receiver tray in behind can be seen very clearly. Dust can be easily removed from the inside.

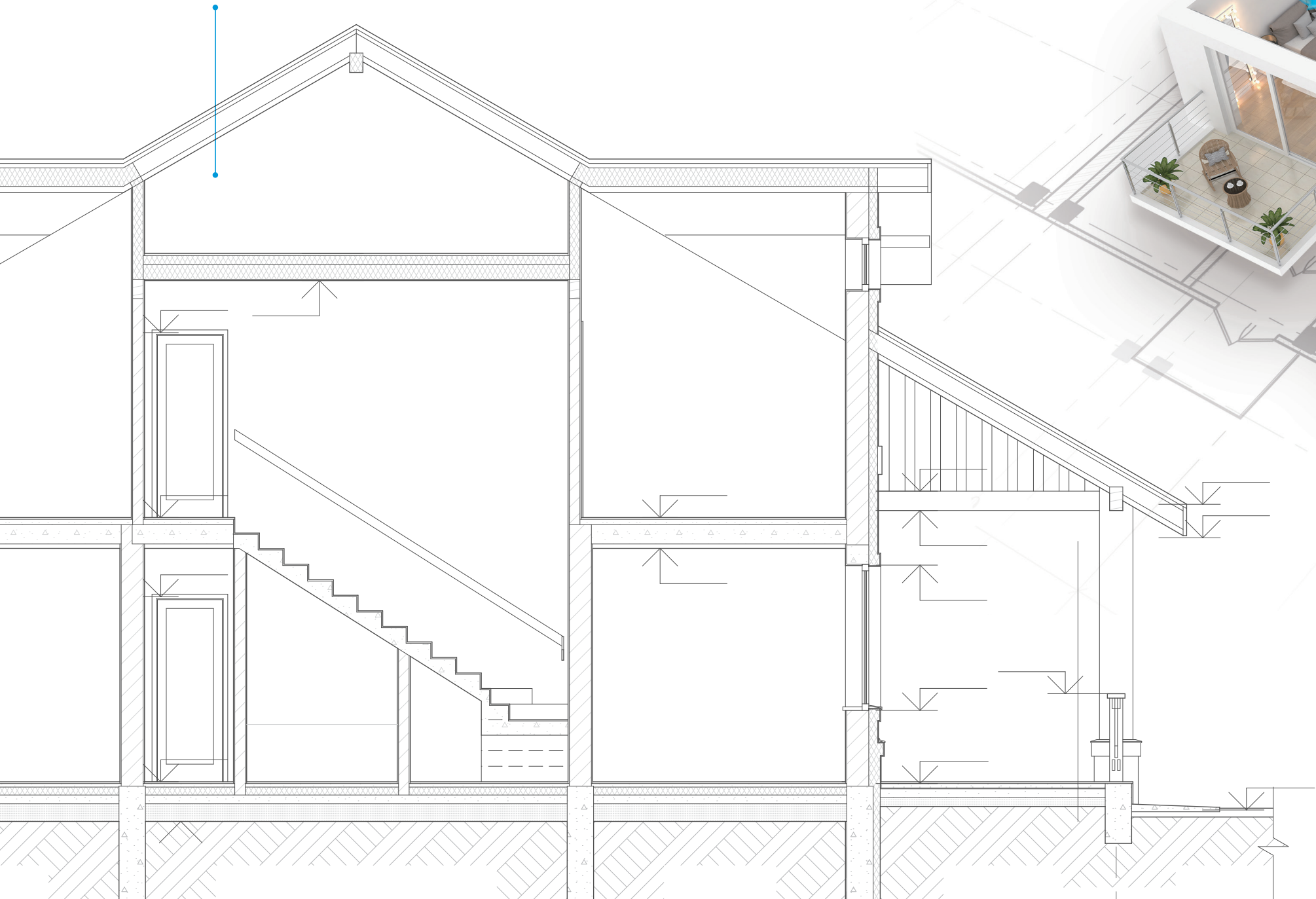


Lennox Ducted Systems

The Ducted system can provide air conditioning through the air ducts and provide cooling or heating comfort for the whole house. Since it is concealed in the ceiling, only the wired controller and air grilles are visible inside the room. Its invisible beauty can fit harmoniously to your interior design and make your room more esthetic, bringing you more beautiful and comfortable home.



Ducted Systems



PRODUCT SPECIFICATION

A6 Duct



Indoor Model			LXA-INHM12NI	LXA-INHM18NI	LXA-INHM24NI	LXA-INHM30NI
Outdoor Model			LXA-RHMI12NO(G)	LXA-RHMI18NO(G)	LXA-RHMI24NO(G)	LXA-RHMI30NO(G)
Average	Pdesignc	kW	3.5	5.4	7.1	8.8
	SEER	W/W	6.3	6.5	6.2	6.5
	Energy Efficiency Class		A++	A++	A++	A++
	Pdesignh	kW	2.7	4.3	5.4	8.0
	SCOP	W/W	4.0	4.0	4.0	4.0
	Energy Efficiency Class		A+	A+	A+	A+
Power supply		V,Hz,Ph	220-240V,1Ph,50Hz	220-240V,1Ph,50Hz	220-240V,1Ph,50Hz	220-240V,1Ph,50Hz
Cooling	Capacity	Btu/h	12000(1800-13607)	18000(8700-20000)	24000(11180-27830)	30000(7600-33600)
Heating	Capacity	Btu/h	13000(3400-14975)	19000(7500-21000)	26000(9580-28954)	32000(9200-34200)
Indoor air flow		m³/h	600/480/300	911/706.3/515.2	1229/1035/825.1	2100/1800/1500
ESP	Range	Pa	0-60	0-100	0-160	0-160
Indoor sound pressure level		dB(A)	34.5/32/30	42/39/35	49/46/41	50.5/48/46
Indoor sound power level		dB(A)	57	58	61	63
Indoor unit	Dimension (WxDxH)	mm	700x506x200	880x674x210	1100x774x249	1360x774x249
	Packing(WxDxH)	mm	860x540x285	1070x725x280	1305x805x315	1570x805x330
	Net/Gross weight	kg	17.8/21.5	24.4/29.6	32.3/39.1	40.5/48.3
Application area		m²	16-23	24-35	32-47	40-59
Qty'per 20'/40'/40'HQ		Indoor unit	214/461/519	120/264/297	77/161/198	49/105/120

Indoor Model			LXA-INHM36NI	LXA-INHM36NI	LXA-INHM42NI	LXA-INHM48NI	LXA-INHM55NI
Outdoor Model			LXA-RHMI36NO(G) 230V	LXA-RHMI36NO(G)	LXA-RHMI42NO(G)	LXA-RHMI48NO(G)	LXA-RHMI55NO(G)
Average	Pdesignc	kW	10.5	10.6	12.1	14.0	15.3
	SEER	W/W	6.2	6.1	6.1	6.1	6.1
	Energy Efficiency Class		A++	A++	A++	A++	A++
	Pdesignh	kW	8.4	8.8	9.5	11.5	12.5
	SCOP	W/W	4.0	4.0	4.0	4.0	4.0
	Energy Efficiency Class		A+	A+	A+	A+	A+
Power supply		V,Hz,Ph	220-240V,1Ph,50Hz	380-415V,3Ph,50Hz	220-240V,1Ph,50Hz	380-415V,3Ph,50Hz	380-415V,3Ph,50Hz
Cooling	Capacity	Btu/h	36000(9400-38000)	36000(9300-40200)	41000(10000-42000)	48000(12000-53000)	52000(14000-59000)
Heating	Capacity	Btu/h	40000(9500-43600)	40000(9500-43800)	46000(11500-48000)	55000(14000-62000)	62000(15000-70000)
Indoor air flow		m³/h	2100/1800/1500	2100/1800/1500	2400/2040/1680	2400/2040/1680	2600/2210/1820
ESP	Range	Pa	0-160	0-160	0-160	0-160	0-160
Indoor sound pressure level		dB(A)	50/48/46	50.5/49/47	51.5/49/48	51.5/49/47	52.5/49/47
Indoor sound power level		dB(A)	61	61	67	66	66
Indoor unit	Dimension (WxDxH)	mm	1360x774x249	1360x774x249	1200x874x300	1200x874x300	1200x874x300
	Packing(WxDxH)	mm	1570x805x330	1570x805x330	1405x915x365	1405x915x365	1405x915x365
	Net/Gross weight	kg	40.5/48.2	40.5/48.2	47.6/55.8	47.6/55.8	47.4/56.1
Application area		m²	48-70	48-70	56-82	56-82	64-94
Qty'per 20'/40'/40'HQ		Indoor unit	49/105/120	49/105/120	62/130/149	62/130/149	62/130/149



COMPACT ROUND FLOW CASSETTE

Feature



Sleep Mode



Anti-cold
Air Function



Wide-angle
Air Flow



Independent
Dehumidification



Auto
Defrosting



Build-in Drain
Pump



Auto Restart
Function



Timer



Low Ambient
Cooling



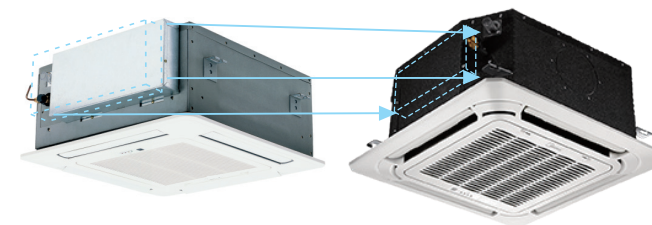
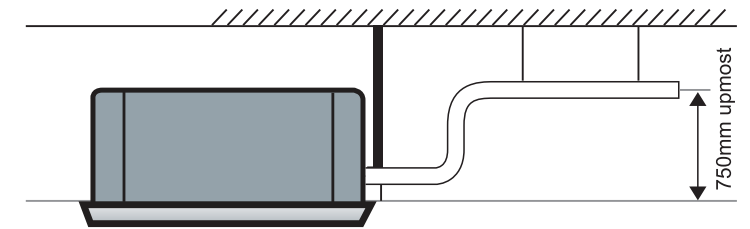
Wired Control

Appearance



Build-in Drain Pump

The drain pump can lift the condensing water up to 750mm.

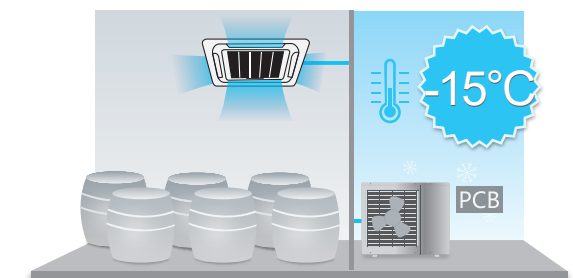


E-box inside

The E-box is simply and safely built inside the indoor unit. This integrated design provides a more compact body size and ease of installation. And the maintenance of the E-box is simple, by opening the air-return-grille.

Low Ambient Cooling

With built-in low ambient kit or special designed PCB, outdoor fan speed can be changed automatically according to condensor temperature, even when the temperature is down to -22°C.



Wired Controller

Compared with infrared remote controller, wired controller can be fixed on the wall and avoid mislaying. It's mainly used for commercial zone and makes air conditioner control more convenient.



PRODUCT SPECIFICATION

Compact Round Flow Cassette



Indoor Model			LXA-IDHM12NI(G)	LXA-IDHM18NI(G)
Outdoor Model			LXA-RHMI12NO(G)	LXA-RHMI18NO(G)
Average	Pdesignc	kW	3.5	5.3
	SEER	W/W	6.6	6.3
	Energy Efficiency Class		A++	A++
	Pdesignh	kW	2.7	4.2
	SCOP	W/W	4.1	4.0
	Energy Efficiency Class		A+	A+
Power supply		V,Hz,Ph	220-240V,1Ph,50Hz	220-240V,1Ph,50Hz
Cooling	Capacity	Btu/h	12000(2897-14020)	18000(9900-19064)
Heating	Capacity	Btu/h	13000(1604-14705)	19000(8100-20800)
Indoor air flow (Hi/Mi/Lo)		m³/h	569/485/389	680/584/479
Indoor sound pressure level (Hi)		dB(A)	42/37.5/34.5	45.4/44/39
Indoor sound power level (Hi)		dB(A)	56	57
Indoor unit	Dimension (W x Dx H)(body)	mm	570x570x260	570x570x260
	Packing (W x Dx H)(body)	mm	675x640x295	675x640x295
	Dimension (W x Dx H)(panel)	mm	647x647x50	647x647x50
	Packing (W x Dx H)(panel)	mm	715x715x123	715x715x123
	Net/Gross weight(body)	kg	16.3/20.4	16/20.6
	Net/Gross weight	kg	2.5/4.5	2.5/4.5
Application area		m²	16-23	24-35
Qty'per 20'/40'/40'HQ		Indoor unit	186/375/429	186/375/429



COMFORT PERFECTIONIST CASSETTE

Feature



Individual
Vane Control



ECO Mode



Easy Installation
and Maintenance



Intelligent
Sensor

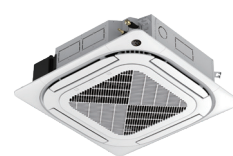


Durability
Design



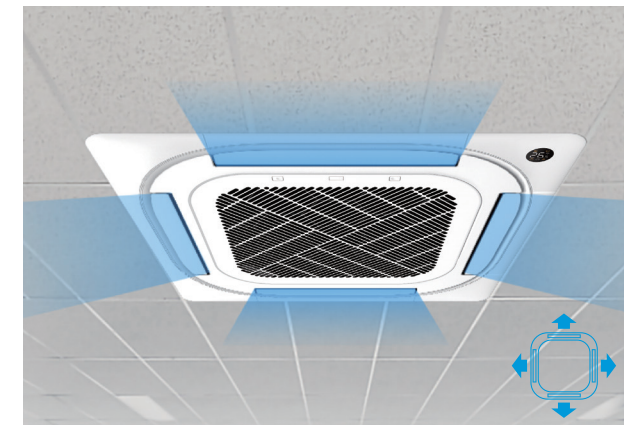
Top Control
and Connection

Appearance



NEARLY 360° AIR DISCHARGE FOR THE HIGHEST EFFICIENCY AND COMFORT

With near to 360° air discharge deliver even and powerful air flow, you will never be bothered by harsh, cold air raughts. Enjoy a real immersive air in open space.



+12%
AIR OUTLET



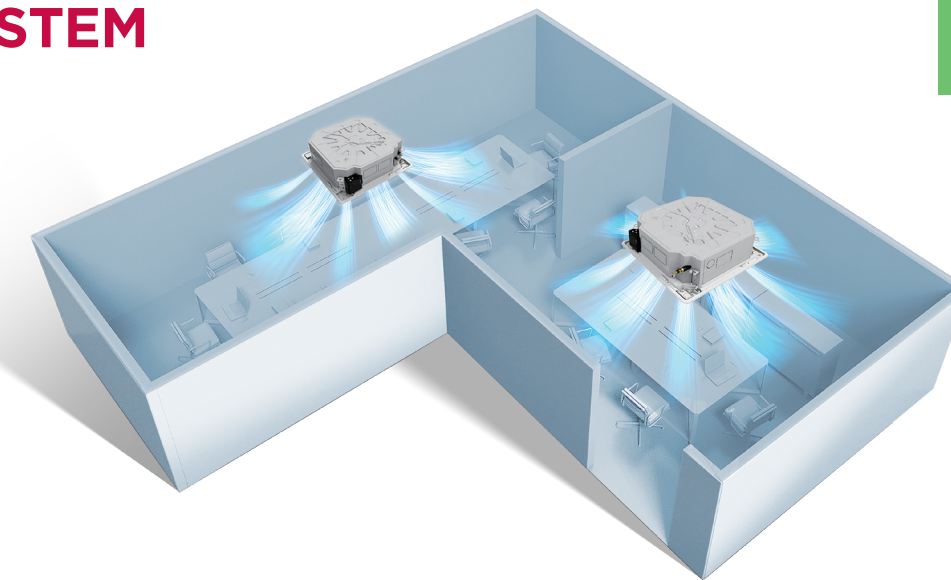
+14%
AIR INLET



TWINS COMBINATION SYSTEM

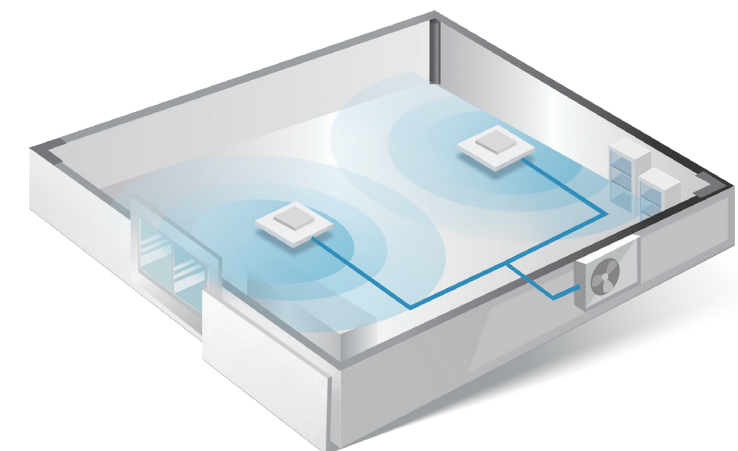
The units can be installed as twin system: 2 same type and size indoor units connect to only one outdoor unit which size is double of single indoor unit. This feature helps improve the air distribution of some special room.

In twin system, one indoor unit must be set as master and the other one as slave. Only the master unit can accept the control signal and the slave unit follow the settings of the master.



TWINS SYSTEM

INDOOR UNITS	30K + 30K	24K + 24K
OUTDOOR UNIT	60K	48K



PRODUCT SPECIFICATION

Comfort Perfectionist Cassette



Indoor Model			LXA-IDHM24NI(G)	LXA-IDHM30NI(G)	LXA-IDHM36NI(G)
Outdoor Model			LXA-RHMI24N0(G)	LXA-RHMI30N0(G)	LXA-RHMI36N0(G) 230V
Average	Pdesignc	kW	7.0	8.8	10.5
	SEER	W/W	6.2	6.6	6.7
	Energy Efficiency Class		A++	A++	A++
	Pdesignh	kW	6.0	7.4	8.5
	SCOP	W/W	4.0	4.2	4.0
	Energy Efficiency Class		A+	A+	A+
Power supply		V,Hz,Ph	220-240V,1Ph,50Hz	220-240V,1Ph,50Hz	220-240V,1Ph,50Hz
Cooling	Capacity	Btu/h	24000(11263-27000)	30000(7600-32000)	36000(9200-39000)
Heating	Capacity	Btu/h	26000(9577-30500)	32000(9200-33200)	38000(9500-42000)
Indoor air flow (Hi/Mi/Lo)		m³/h	1247/1118/992	1700/1530/1300	1700/1530/1300
Indoor sound pressure level (Hi)		dB(A)	50/47.5/42	50.5/48/46	51/48/46
Indoor sound power level (Hi)		dB(A)	57	63	63
Indoor unit	Dimension (W x Dx H)(body)	mm	830x830x205	830x830x245	830x830x245
	Packing (W x Dx H)(body)	mm	910x910x250	910x910x290	910x910x290
	Dimension (W x Dx H)(panel)	mm	950x950x55	950x950x55	950x950x55
	Packing (W x Dx H)(panel)	mm	1040x1030x90	1040x1030x90	1040x1030x90
	Net/Gross weight(body)	kg	21.6/25.4	24.6/28.6	27.2/31.2
	Net/Gross weight	kg	6/9	6/9	6/9
Application area		m²	32-47	40-59	48-70
Qty'per 20'/40'/40'HQ		Indoor unit	108/234/260	96/208/234	96/208/234

LXA-IDHM36NI(G)	LXA-IDHM42NI(G)	LXA-IDHM48NI(G)	LXA-IDHM55NI(G)
LXA-RHMI36N0(G)	LXA-RHMI42N0(G)	LXA-RHMI48N0(G)	LXA-RHMI55N0(G)
10.5	12.1	14.0	15.3
6.4	6.1	6.1	6.3
A++	A++	A++	A++
8.2	9.5	11.0	11.9
4.0	4.0	4.0	4.0
A+	A+	A+	A+
380-415V,3Ph,50Hz	220-240V,1Ph,50Hz	380-415V,3Ph,50Hz	380-415V,3Ph,50Hz
36000(9200-39000)	41000(10000-42000)	48000(12000-54000)	53000(14000-57000)
38000(9500-43200)	46000(11500-48000)	55000(14000-59000)	62000(15000-68000)
1700/1530/1300	1900/1750/1600	1900/1750/1600	2000/1850/1650
51/49/46	52.5/50/47.5	52.5/50.5/48	54.5/52/49.5
63	65	65	65
830x830x245	830x830x287	830x830x287	830x830x287
910x910x290	910x910x330	910x910x330	910x910x330
950x950x55	950x950x55	950x950x55	950x950x55
1040x1030x90	1040x1030x90	1040x1030x90	1040x1030x90
27.2/31.2	29.3/33.5	29.3/33.5	29.3/33.5
6/9	6/9	6/9	6/9
48-70	56-82	56-82	64-94
96/208/234	84/182/208	84/182/208	84/182/208



3D AIRFLOW

Vertical air flow and horizontal air flow can be adjusted by remote controller to direct air flow to every corner of the room.



95° vertical swing



70° horizontal swing



10m Windblast



Wide Horizontal Air Flow



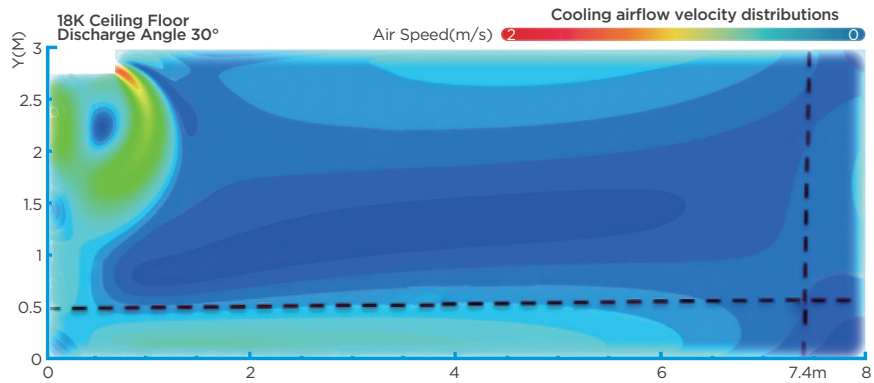
Wide Vertical Air Flow

X-wind

To make the cool air reaching you everywhere in the room.

Inverter Type Indoor unit outlet air speed and coverage range

@COOLING MODE	Air flow (m³/h)
18K	958
24K	1192
36K	1955



FRESH AIR

People can breathe the fresh air but doesn't need to open the window by hands. A extra connection pipe can bring the freshness from Outside.



CEILING & FLOOR

Twin Style installation, fashionable design and streamline appearance, suitable for different room styles.

Feature



Appearance



EASY INSTALLATION

Fashionable design and streamline appearance, suitable for different room styles.



3-way Pipe Out

The connection pipe can be put into the unit from bottom, side or rear, which makes installation much easier.



2-way Drainage

Both right side and left side rainage holes are available to avoid the space limitation for drainage pipe installation.

PRODUCT SPECIFICATION

Ceiling & Floor



Indoor Model			LXA-ITHM18NI(G)	LXA-ITHM24NI(G)
Outdoor Model			LXA-RHMI18NO(G)	LXA-RHMI24NO(G)
Average	Pdesignc	kW	5.4	7.2
	SEER	W/W	6.2	6.1
	Energy Efficiency Class		A++	A++
	Pdesignh	kW	4.0	5.5
	SCOP	W/W	4.0	4.0
	Energy Efficiency Class		A+	A+
Power supply		V,Hz,Ph	220-240V,1Ph,50Hz	220-240V,1Ph,50Hz
Cooling	Capacity	Btu/h	18000(9250~20000)	24000(10990~26500)
Heating	Capacity	Btu/h	19000(8250~21500)	26000(9280~28285)
Indoor air flow (Hi/Mi/Lo)		m³/h	958/839/723	1192/1023/853
Indoor sound pressure level (Hi)		dB(A)	44/41/37	51/47/43
Indoor sound power level (Hi)		dB(A)	57	55
Indoor unit	Dimension (WxDxH)	mm	1068x675x235	1068x675x235
	Packing (WxDxH)	mm	1145x755x318	1145x755x318
	Net/Gross weight	kg	28/33.3	28/33.1
Application area		m²	24~35	32~47
Qty'per 20'/40'/40'HQ		Indoor unit	102/220/252	102/220/252

LXA-ITHM36NI(G)	LXA-ITHM36NI(G)	LXA-ITHM48NI(G)	LXA-ITHM55NI(G)
LXA-RHMI36NO(G) 230V	LXA-RHMI36NO(G)	LXA-RHMI48NO(G)	LXA-RHMI55NO(G)
10.5	10.5	14.0	15.5
6.4	6.2	6.1	6.1
A++	A++	A++	A++
8.6	8.6	11.2	11.9
4.1	4.0	4.0	4.0
A+	A+	A+	A+
220-240V,1Ph,50Hz	380-415V,3Ph,50Hz	380-415V,3Ph,50Hz	380-415V,3Ph,50Hz
36000(9300~39000)	36000(9300~40200)	48000(12000~52000)	54000(14000~57000)
40000(9600~43600)	40000(9500~43600)	55000(14000~58000)	62000(15000~67000)
1955/1728/1504	1955/1728/1504	2100/1850/1600	2200/1950/1650
51.5/48/45	51/47.5/45	53/50/46	55/52/48
64	64	67	67
1650x675x235	1650x675x235	1650x675x235	1650x675x235
1725x755x318	1725x755x318	1725x755x318	1725x755x318
41.5/48	41.5/48	41.7/48.5	42.3/49.2
48-70	48-70	56-82	64-94
72/147/167	72/147/167	72/147/167	72/147/167



MULTI SPLIT SYSTEM

Feature



Appearance



Advantages of Multi system

Wide Selection Of Indoor Units

Provide a wide selection of indoor unit capacities and styles to suit a variety of room sizes and designs.



Space Saving And Low Noise

Connect to several indoor units to a single outdoor unit, save installation space and reduce outdoor noise.



Lower Energy Consumption

Compared with multiple outdoor units running at the same time, multisystem can be an option to improve heat exchange and energy efficiency, reduce power consumption.

Individual Control

Provide individual control for each indoor unit, brings desired comfort and saves energy, since you can heat or cool only those rooms you are using versus the entire house.



PRODUCT SPECIFICATION

Multi Split System (AB8.5)



Outdoor Model			LXB-KRMHM20NO	LXB-KRMHM30NO
Indoor unit combination			LXVB-RHM09NI*2	LXVB-RHM09NI*3
Power supply		V,Hz,Ph	220-240V,1Ph,50Hz	220-240V,50Hz,1Ph
Cooling	Capacity	Btu/h	18000(7800-19500)	27000(10500-28000)
Heating	Capacity	Btu/h	19000(8200-19600)	28000(8200-28000)
Seasonal Cooling	Pdesignc	kW	5.3	7.9
	SEER	W/W	6.3	6.3
	Energy Efficiency Class		A++	A++
Heating (Average)	Pdesignh	kW	4.5	5.7
	SCOP	W/W	4.0	4.0
	Energy Efficiency Class		A+	A+
Heating (Warmer)	Pdesignh	kW	5.0	6.0
	SCOP	W/W	5.1	5.1
	Energy Efficiency Class		A+++	A+++
Outdoor air flow		m³/h	2100	3000
Indoor sound power level		dB(A)	54	56
Outdoor sound pressure level		dB(A)	54	58
Outdoor sound power level		dB(A)	65	68
Outdoor unit	Dimension(WxDxH)	mm	805*330*554	890*342*673
	Packing(WxDxH)	mm	915*370*615	1030*438*750
	Net/Gross weight	kg	35/38	48/51.8
Refrigerant piping	Liquid side/ Gas side	mm(inch)	2x6.35mm(2x1/4in)/ 2x9.52mm(2x3/8in)	3x6.35mm(3x1/4in)/3x9.52mm(3x3/8in)
	Max. length for all rooms	m	40	60
	Max. length for one indoor unit	m	25	30
	Max. height difference between indoor and outdoor unit	m	15	15
	Max. height difference between indoor units	m	10	10
Ambient temperature	Cooling	°C	-15-50	-15-50
	Heating	°C	-15-24	-15-24